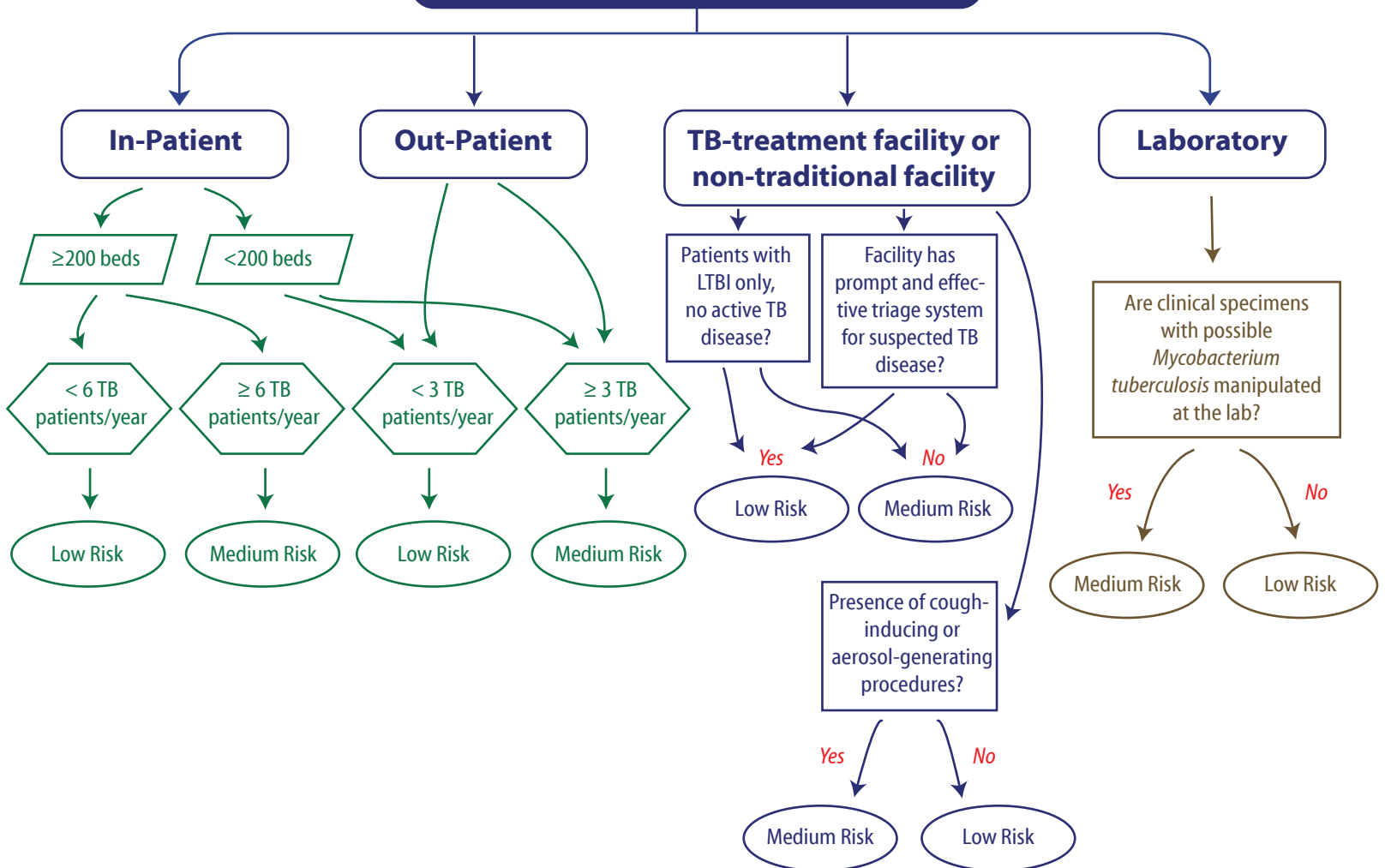


# Tuberculosis Risk Classification and Surveillance Guide

## What kind of setting is the Health Care Worker (HCW) in?

Note: If there is evidence of ongoing TB transmission, the HCW will be considered high risk.



## SURVEILLANCE GUIDE

### Low Risk:

Baseline two-step Tuberculin Skin Test (TST) or one-step Blood Assay for *M. tuberculosis* (BAMT)

### Medium Risk:

Baseline TST or BAMT and annual TST or BAMT

### High Risk or Potential Ongoing Transmission:

Perform contact investigation. Administer TST or BAMT as soon after exposure as possible. If initial test is negative, repeat TST 8-10 weeks after end of exposure to *M. tuberculosis*. High Risk is a temporary classification. Once the infection is ruled out or exposure is eliminated, the HCW reverts to Medium or Low Risk, based on her/his exposure setting.

### Updated March 2006:

Cristine V. Amurao, MD, MPH  
Senior Medical Researcher  
Occupational Health Research  
Information based on the CDC's *Guidelines for Preventing the Transmission of Mycobacterium tuberculosis in Health-Care Settings, 2005.*

